



For information about local conservation and outdoor activities go to:

www.killinglyconservation.org

Follow us on Facebook:
Killingly Conservation Commission



To report problems on this property, please contact the Killingly Planning Department: 860-779-5311
172 Main Street, Killingly, CT 06239
or
Resident Trooper: 860-779-4900.

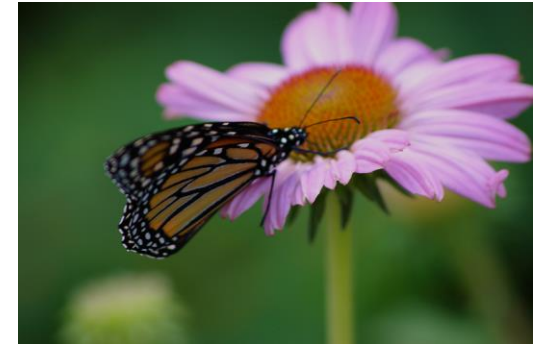
For emergencies as always call 911.

The nature preserve is open from DAWN to DUSK for activities such as:

- hiking and cross-country skiing
- fishing
- hunting by permit only
[See DEEP regulations for seasons and safety precautions.]
- bird watching and wildlife observation

Please help us protect this area by:

- not building fires or camping on the nature preserve
- using the trails for walking, not for motorized vehicles, bicycles, or horses
- keeping your pets on a leash and check for ticks
- avoiding disturbance to wild animals
- removing your trash
- respecting the quiet atmosphere for others to enjoy

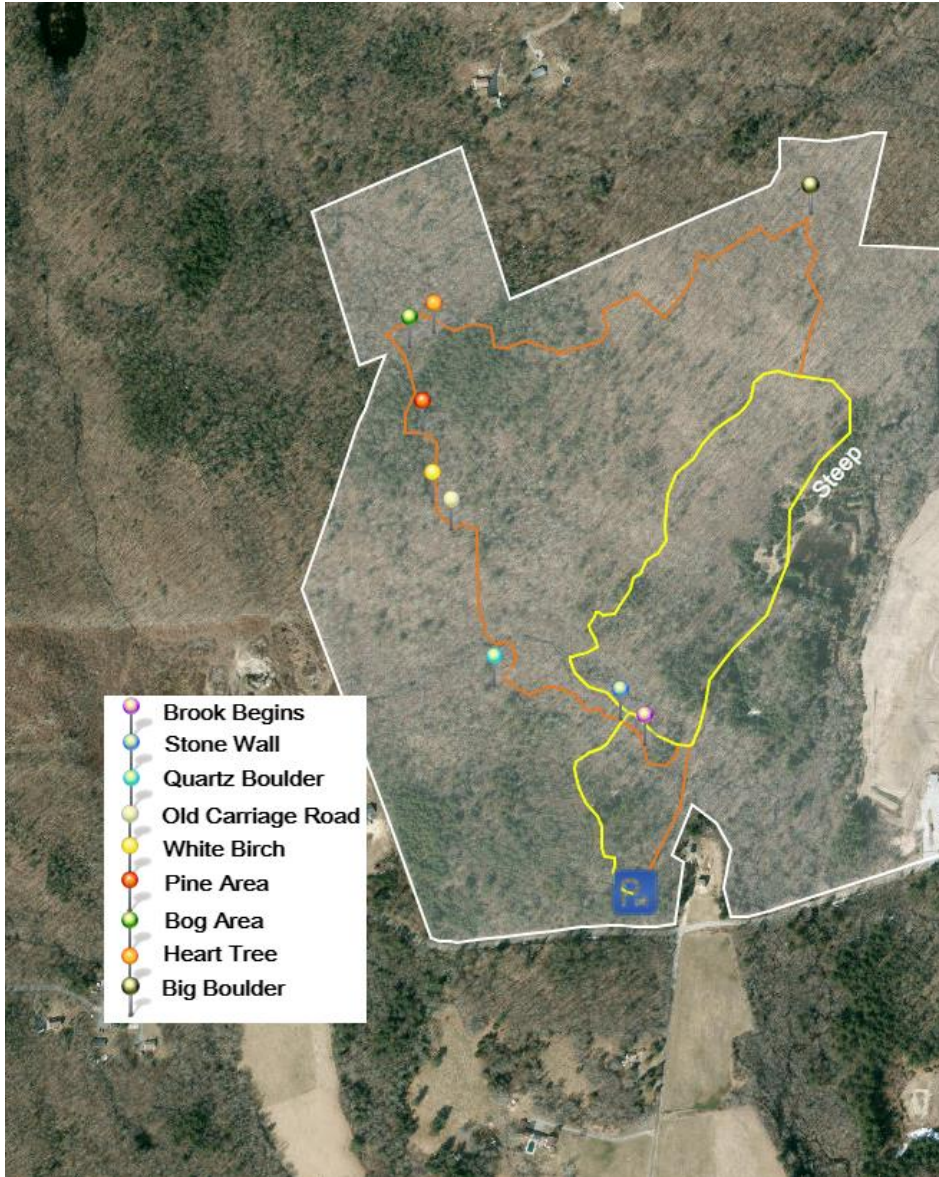


QUANDOC CONSERVATION AREA

Address:
246 Brickhouse Road, Killingly, CT



Quandoc Conservation Area is a nature preserve owned by the Town of Killingly and protected by a conservation easement held by the Killingly Conservation Commission. The Town purchased this 225-acre property in the 1960s. A portion of the parcel has been home to Town services, and 125 beautiful acres have been preserved in their natural state and are used for passive recreation, environmental education, wildlife habitat and ecosystem protection.








Quandoc Conservation Area
246 Brickhouse Road, Killingly

This 125-acre property features forests, several wildlife habitats, stone walls, evidence of old farm fields and recreated wetlands along the Quandoc Brook.

Follow the yellow trail markers along a 1.5 loop trail through this beautiful woodland. The orange trail blaze intersects and follows the yellow trail at multiple points, but makes for a longer hike (approximately 2 miles). Yellow trail head is left of the kiosk, orange trail head is right of the kiosk.

Use caution -- the north section is rocky and steep.

CONTINUE STRAIGHT 	START OF TRAIL 	RIGHT TURN 
SPUR LEADING TO A DIFFERENT TRAIL 	END OF TRAIL 	LEFT TURN 