



For information about local conservation
and outdoor activities go to:

www.killinglyconservation.org

Follow us on Facebook:
Killingly Conservation Commission



To report problems on this property,
please contact
the Killingly Planning Department:
860-779-5311
172 Main Street, Killingly, CT 06239
or
Resident Trooper: 860-779-4900.

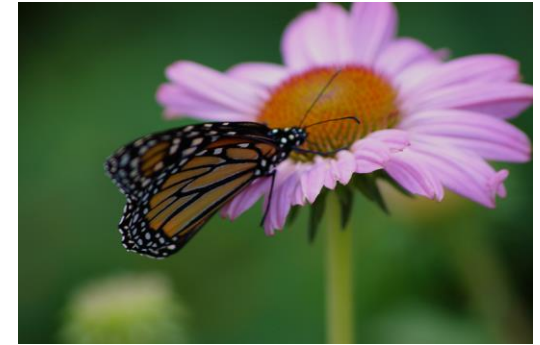
For emergencies as always call 911.

The nature preserve is open from
DAWN to DUSK for activities such as:

- hiking and cross-country skiing
- fishing
- hunting by permit only
[See DEEP regulations for seasons
and safety precautions.]
- bird watching and wildlife
observation

Please help us protect this area by:

- not building fires or camping on
the nature preserve
- using the trails for walking, not for
motorized vehicles, bicycles, or
horses
- keeping your pets on a leash and
check for ticks
- avoiding disturbance to wild
animals
- removing your trash
- respecting the quiet atmosphere
for others to enjoy

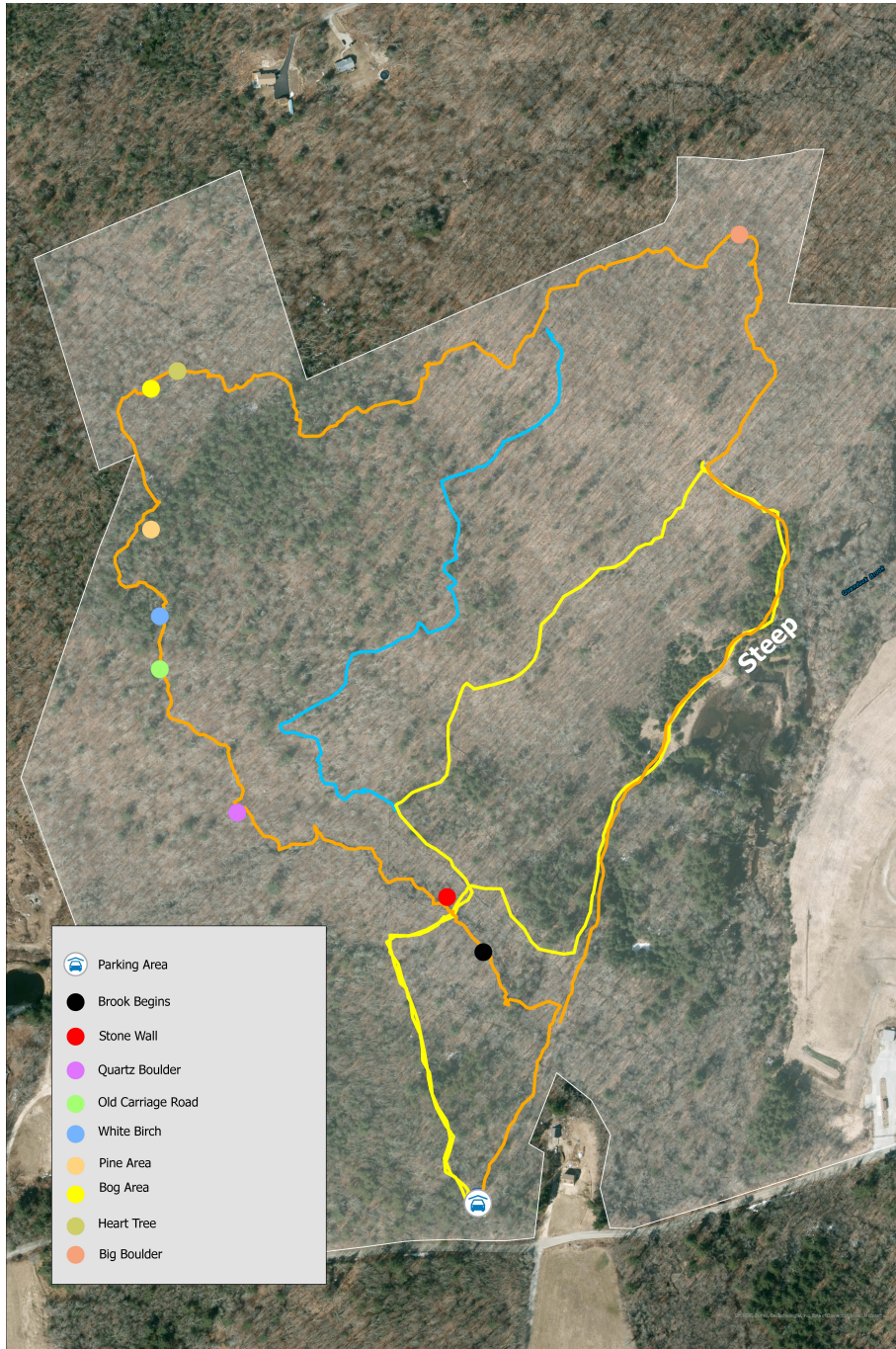


QUANDOC CONSERVATION AREA

Address:
246 Brickhouse Road, Killingly, CT



Quandoc Conservation Area is a nature
preserve owned by the Town of Killingly
and protected by a conservation
easement held by the Killingly
Conservation Commission. The Town
purchased this 225-acre property in the
1960s. A portion of the parcel has been
home to Town services, and 125
beautiful acres have been preserved in
their natural state and are used for
passive recreation, environmental
education, wildlife habitat and
ecosystem protection.



Quandoc Conservation Area

246 Brickhouse Road, Killingly

This 125-acre property features forests, several wildlife habitats, stone walls, evidence of old farm fields and recreated wetlands along the Quandoc Brook.

Follow the yellow trail markers along a 1.5 loop trail through this beautiful woodland. The orange trail blaze intersects and follows the yellow trail at multiple points, but makes for a longer hike (approximately 2 miles). Yellow trail head is left of the kiosk, orange trail head is right of the kiosk. The blue trail connects the orange and yellow trails and is approximately 0.5 miles.

Use caution -- the north section is rocky and steep.

CONTINUE STRAIGHT 	START OF TRAIL 	RIGHT TURN
SPUR LEADING TO A DIFFERENT TRAIL 	END OF TRAIL 	LEFT TURN